



\$ 1,270,000

22312 PINE BLUFF WAY, EDMOND, OK, USA

<https://heritagehomesok.com>

Lorenz Heritage Homes - 22312 Pine Bluff Custom •
Stunning • Pond with Fountain View Discover luxury
living at its finest on this 1.17-acre homesite in the
highly sought-after Addington community of Deer
Creek. Nestled at the NW corner of N. Penn & Coffee
Creek, this premier location offers the perfect...

22312 Pine Bluff Way, Edmond,
OK, USA

- 4 beds
- 5 baths
- Addington Farms
- Active
- 3707 sq ft



BASIC FACTS

Property ID: 1491

Bathrooms: 5

Lot size: 1.17 acres

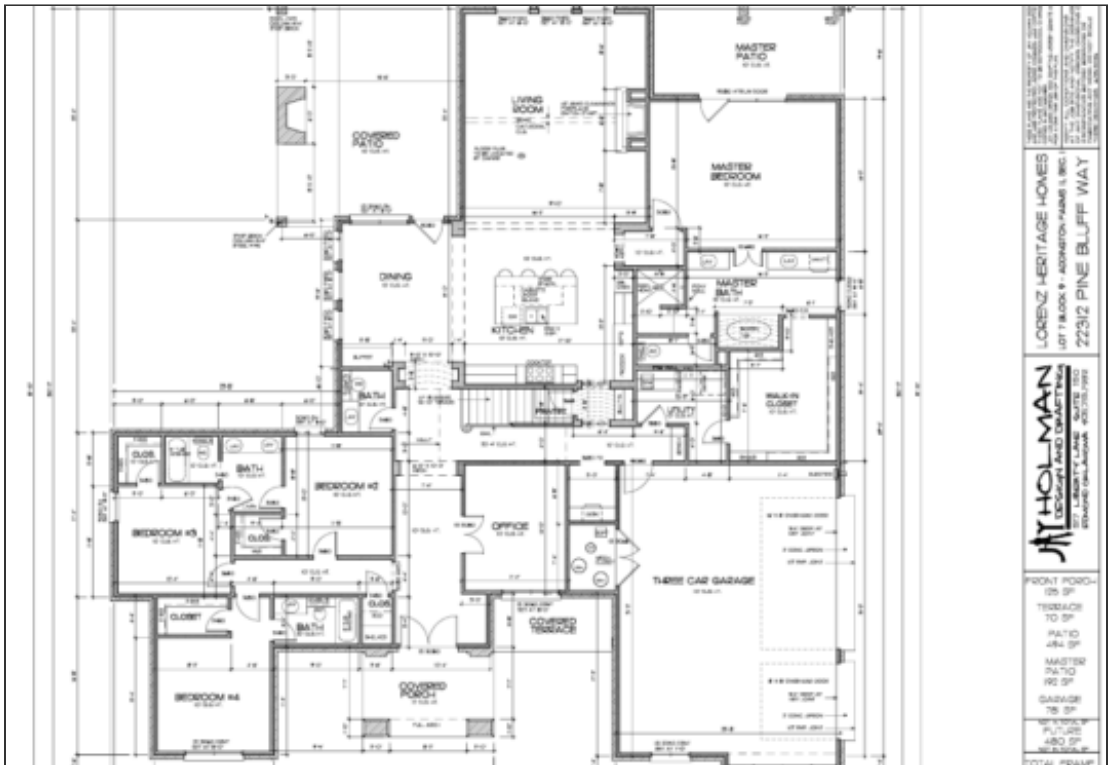
Status: Active

Bedrooms: 4

Area: 3707 sq ft

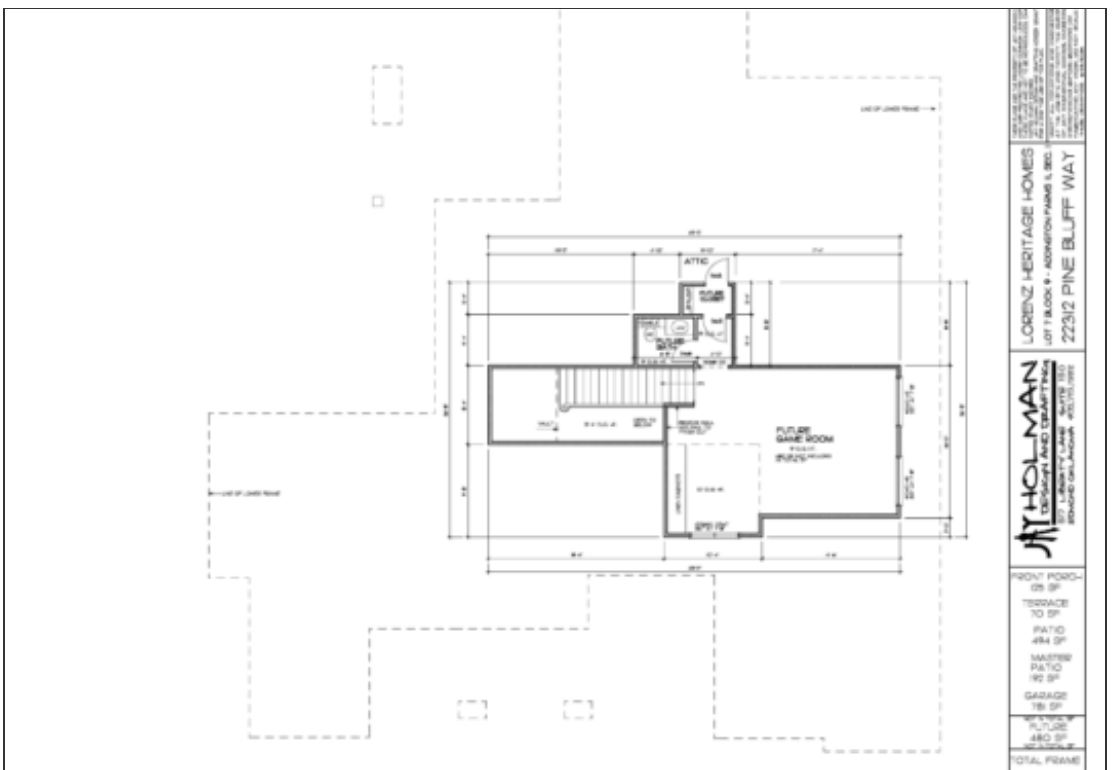
Year built: 2025

FLOOR PLAN



Floor Plan





LORENZ HERITAGE HOMES
 LOT 7 BLOCK 9 - ADDITION PARKS & SEC.
 2231/2 PINE BLUFF WAY

HOLMAN
 DESIGN AND CONSTRUCTION
 207 LIBERTY LANE SUITE 100
 BRIDGEVILLE, PA 15005

FLOOR FLOOR
 STORAGE 10 SF
 PATIO 494 SF
 MASTER BATH 55 SF
 GARAGE 181 SF

FINISHED FLOOR 480 SF
 TOTAL FINISH

Floor Plan (2)

